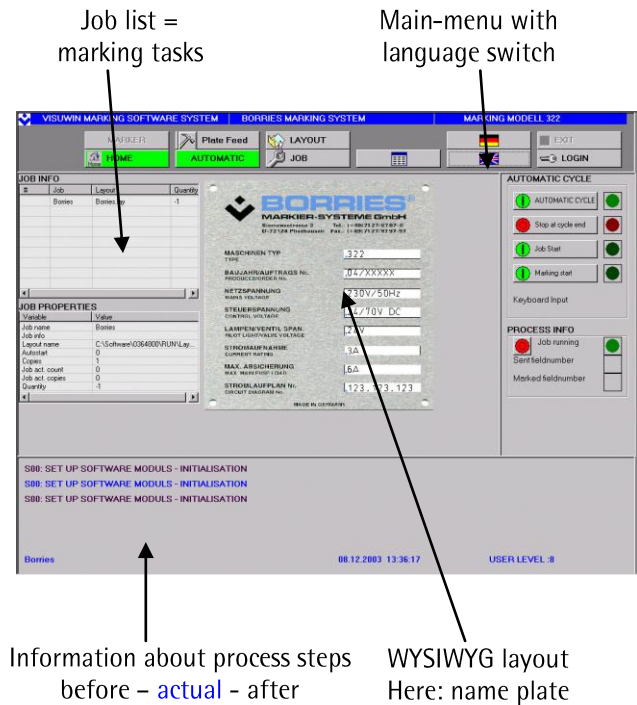


## Marking software VisuWin Professional

### Technical data sheet

- Flexible software for Windows PCs to control the marking devices
- Used for different marking technologies: scribe, stylus, DataMatrix-, typewheel and laser marking machines
- For standard machine models and for customer specific solutions
- WYSIWYG representation during creation, processing and marking of the layouts
- Numerous data/ time functions, counters, variables, shift identifier
- Plot-files (HPGL) direct or converted from DXF (optional converter)
- Data transfer via barcode, serial interface (StxEtx, with/without BCC, 3964R), print-server, series11, file transfer (FTP-server), connection with customer databases
- Unlimited quantity of the layouts
- Marking jobs to prepare and save the marking sequences
- Split installation possible, for example centralized preparation of the marking jobs for several marking machines
- Versatile protocol functions, customer-specific protocol for data transfer integrable



### Application area

VisuWin PRO (Professional) is a universal program for marking process management. Client-Server structure allows easy integration of project specific handlings (data processing, data transfer, workflow functions and marking technology) as Modules (Server) with standardized interface. On the one hand this software is used as basis standard for some types of BORRIES marking systems such as typewheel marking machines as well as for manually- or robot-controlled VIN-number marking complexes. On the other hand it is used in various marking equipment, where a complex and/ or specific data-processing or manipulations must be integrated.

## Options

- Customer specific control program for workpiece handling
- Customer specific protocols for data transfer (bi-directional)
- Additional inputs/ outputs for signal processing or handling management
- Control of more than one marking machines from one PC/ with one software
- Data transfer via fieldbus-interface

## Password Level

Control of the equipment and functions can be safely protected from un-authorized access in eight different password levels. Rights and authorities for each level can be individually configured for each project. For the lowest level is typically only automatic operation possible, for middle levels text input and layout changes are permitted, the highest level is used for service specialists.

## Operation

Project specific operation cycle will be defined with the help of script programming language. The structure and complexity of such script-program is like any PLC program. Scripts can be edited with any simple text editor or with a special tool included in the BORRIES delivery package. A lot of customers use this possibility to make some small changes of the operation process or to realise some additional functions (for example signal-communication with other control units).

## Layouts

A module „Layout Editor“ can control any quantity of the layouts (marking models). Each layout can have up to 100 fields (lines), with maximum 128 characters in one line. Data- and time functions, and also counter functions can be used. It is also possible to define the global variables that can be used simultaneously in several layouts. For each layout a background (work piece-) picture can be defined as BMP or JPG file for WYSIWYG representation.

## Job processing

„Jobs“ mean prepared marking tasks for one or several marking operations. To create the jobs and manage them (release or stop), the module „Job-Editor“ can be used. This module can be also installed on any other PC (with network connection).

## Minimal requirements to the PC and operation systems

- Windows 7 (de, en, multilanguage), Windows XP(de, en, multilanguage)
- Multi-core processor 1.5GHz, or acc. to the task higher
- 2 GB RAM (4 GB RAM for 64 Bit) or acc. to the task higher and 1000MB free hard drive space, or acc. to the task higher
- Graphic card and Monitor with resolution min 1024 x 768
- Depends of project: serial interface, USB, Ethernet, free PCI slots.

Details are subject to change.